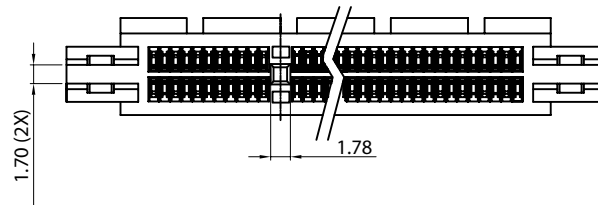
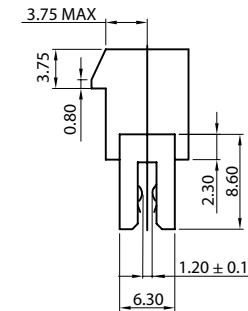
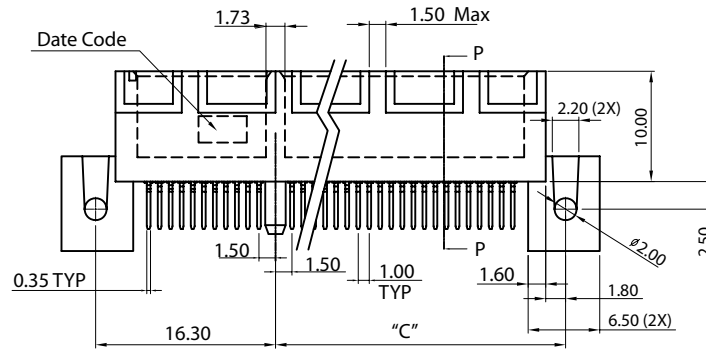


NOTE:
 OPTIONS AVAILABLE FOR
 OTHER PCB THICKNESS
 CONTACT SMP TECHNOLOGY
 INC.

B

DIMENSION TABLE

POSITION	DIM"A"	DIM"B"	DIM"C"	DIM"D"	DIM"E"
36	7.65	25.00	12.30	6	34.80
64	21.65	39.00	26.30	20	48.80
98	38.65	56.00	43.30	37	65.80
164	71.65	89.00	76.30	70	98.80



ELECTRICAL:

CURRENT RATING: 1.1 AMPS PER PIN
 VOLTAGE RATING: 50 VOLTS AC (RMS)/DC
 CONTACT RESISTANCE: < 30m
 INSULATOR RESISTANCE: > 1000M
 DIELECTRIC WITHSTANDING VOLTAGE: 500VAC FOR 1 MIN.
 OPERATING TEMPERATURE: UP TO +65° C

MECHANICAL:

INSERTION FORCE: 117 GRAMS MAX. PER CONTACT PAIR

MATERIAL:

INSULATOR: HIGH TEMPERATURE THERMOPLASTIC UL94V-0 (Nylon 9T)
 CONTACT: COPPER ALLOY (Phosphor Bronze C5191)
 STANDARD PLATING: GOLD PLATING OVER NICKEL ON CONTACT AREA
 TIN SOLDER TAIL
 PART IS LEAD FREE AND ROHS COMPLIANT

HOW TO ORDER:

B 0 4 4 - X X X 9 - 1 X X - Z

NUMBER OF CONTACTS:

- 036
- 064
- 098
- 164

INSULATOR COLOR:

- 1 - WHITE
- 2 - BLACK

SELECTIVE PLATING:

- 6 - Au FLASH CONTACT AREA/TIN TAIL
- 7 - 10u" Au CONTACT AREA/TIN TAIL
- 8 - 15u" Au CONTACT AREA/TIN TAIL
- 9 - 30u" Au CONTACT AREA/TIN TAIL

**RoHS
 COMPLIANT**

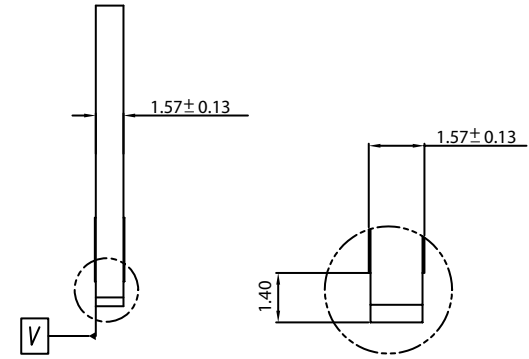
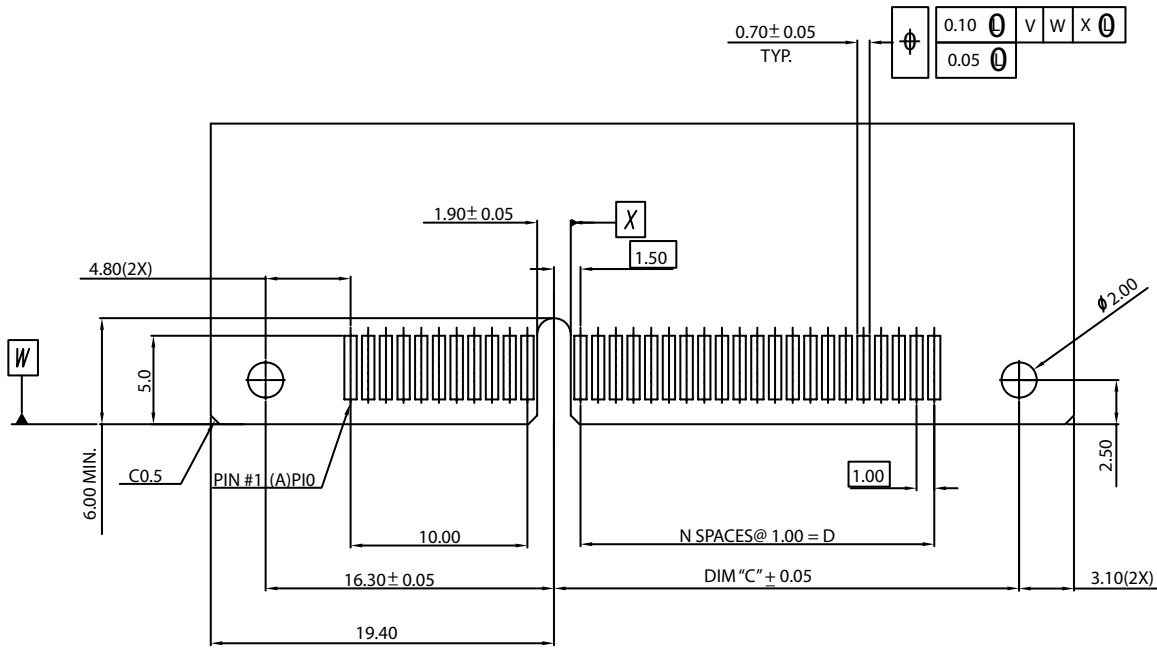
Rev	Issued	Drawn	Checked	Approved	Date
0	Issued	WHS	S.M.	S.M.	10/25/07
A	Added Table Dimensions & PCB Layout	B.S.	S.M.	S.M.	10/25/07
B	Revised Table Dimensions and PCB Thickness	B.S.	S.M.	S.M.	10/01/13

SMP TECHNOLOGY, INC.

PCI Express Card Edge Connector; Straddle Mount with Mtg. Ears

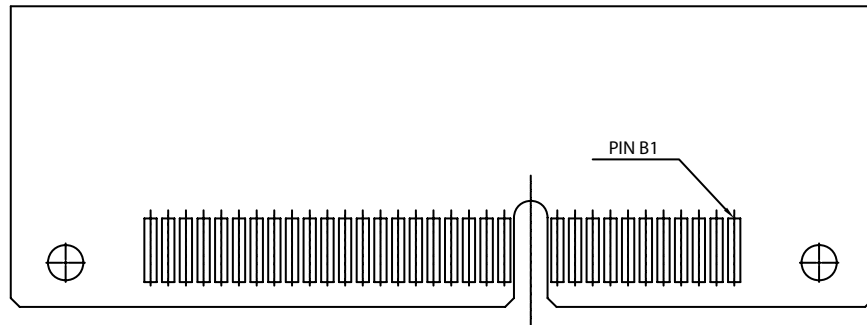
TOL. DEC. .X +/- 0.35 .XX +/- 0.25 .XXX +/- 0.08 ANGLE +/- 0.3° UNIT: mm

P/N: B044-XXX9-1XX-Z



DIMENSION TABLE

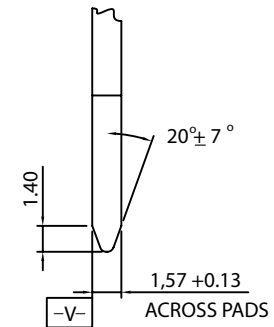
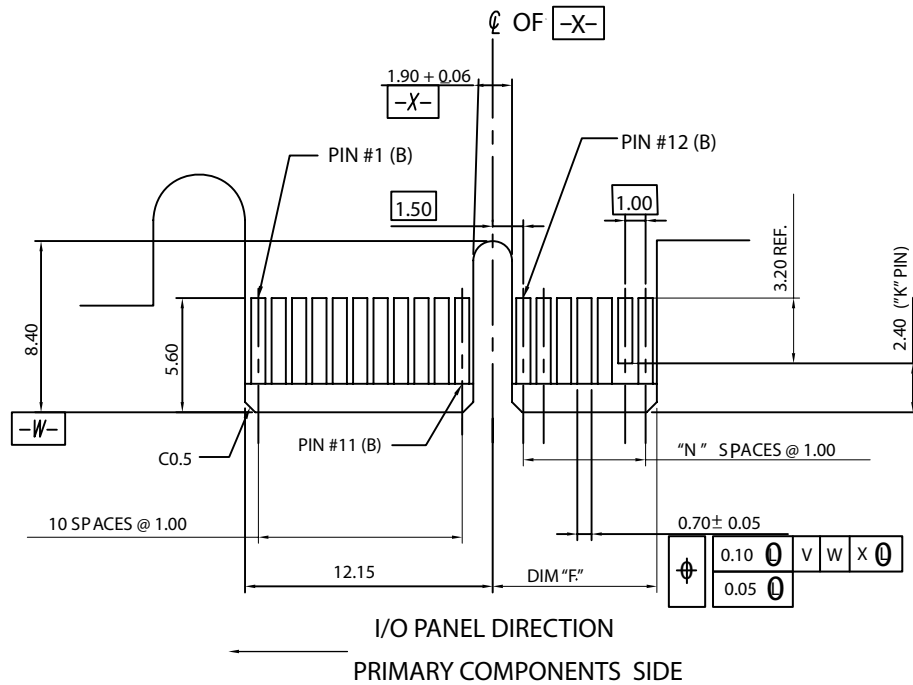
POSITON	DIM"A"	DIM"B"	DIM"C"	DIM"D"	DIM"E"
36	7.65	25.00	12.30	6	34.80
64	21.65	39.00	26.30	20	48.80
98	38.65	56.00	43.30	37	65.80
164	71.65	89.00	76.30	70	98.80



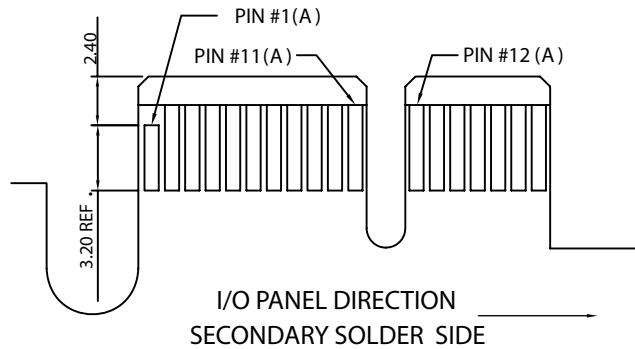
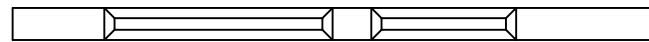
RECOMMENDED PCB LAYOUT
STRADDLE SIDE

SMP TECHNOLOGY, INC.

PCI Express Card Edge Connector; Straddle Mount



- NOTES:
- NO TIE BAR PERMITTED FROM CARD EDGE TO LEADING EDGE OF PADS FOR PINS A1 AND PIN K
 - CHAMFER EDGES MUST BE FREE OF BURRS



B DIMENSION TABLE

POSITION	DIM "A"	DIM "B"	DIM "C"	DIM "D"	DIM "E"	DIM "F"	"K" PINS "
36	7.65	25.00	12.30	6	34.80	8.15	B17
64	21.65	39.00	26.30	20	48.80	22.15	B17, B31
98	38.65	56.00	43.30	37	65.80	39.15	B17, B31, B45
164	71.65	89.00	76.30	70	98.80	72.15	B17, B31, B45, B17

SMP TECHNOLOGY, INC.

PCI Express Card Edge Connector; Straddle Mount