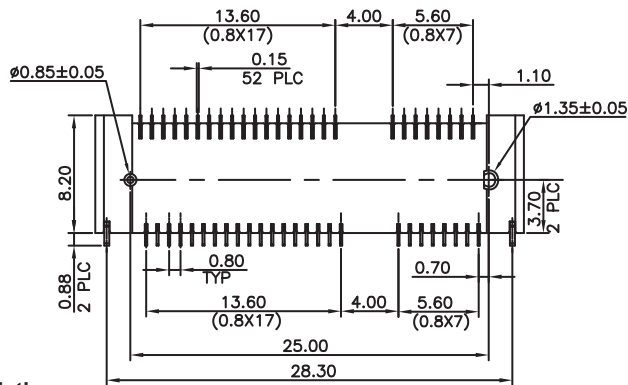


Recommended Module Insertion Angle



Mating Card Support Information

For Part Number, Ordering and PCB Layout Information On Latch Support Mechanism, Please See Pages 3-4
 For Part Number, Ordering and PCB Layout Information On Standoff Supports, Please See Page 5

NOTES:

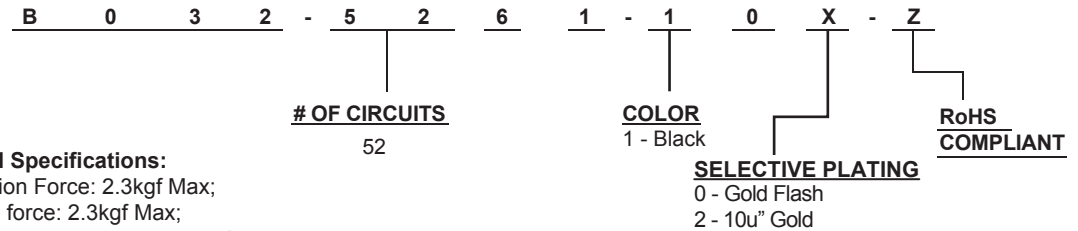
Electrical characteristics:

Voltage rating: 50V AC per contact;
 Current rating: 0.5 AMP per contact;
 Dielectric withstanding voltage: 300V AC RMS (Min);
 Insulation resistance: 500 Megohms at 500V DC Min;
 Contact resistance: 55 milliohms Max

Material:

Housing: U.L. 94V-0 High Temperature Thermo Plastic, Black
 Contact: Copper Alloy
 Contact Plating: Specified Gold Thickness In Contact Area,
 Tin Plated Solder Tail, All Over 50u" Nickel Subplate
 Operating Temperature: -55° ~ 80° C

HOW TO ORDER:



Mechanical Specifications:

PCB Insertion Force: 2.3kgf Max;
 Withdrawal force: 2.3kgf Max;
 Durability: Insertion/withdrawl: 50 Cycles

Rev	Issued	Drawn	Checked	Approved	Date
0	Issued	B.S.	S.M.	S.M.	3/28/07
A	Added Side by Side PCB Layout	B.S.	S.M.	S.M.	08/21/13

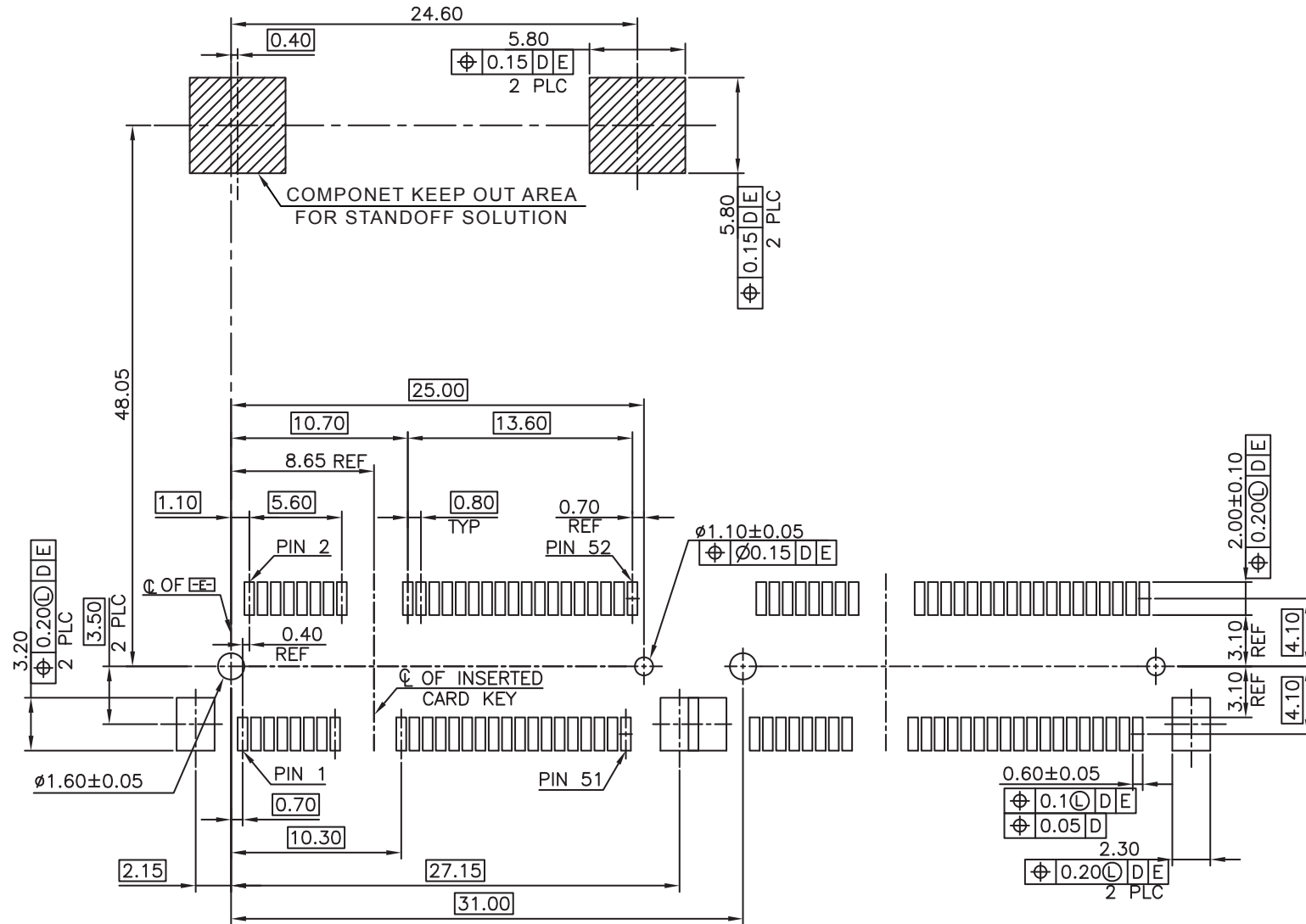
SMP TECHNOLOGY, INC.

PCI Express Mini Card Connector, 4.00mm Height

SCALE N/A

TOL. DEC. .X +/- 0.30 .XX +/- 0.20 .XXX +/- 0.15 ANGLE +/- UNIT: mm

P/N: B032-5261-10X-Z



RECOMMENDED P.C. BOARD PATTERN
(SIDE BY SIDE)

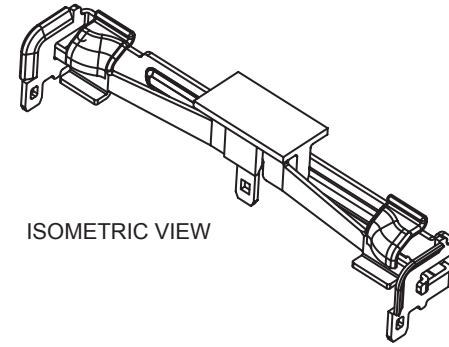
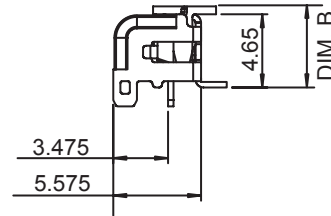
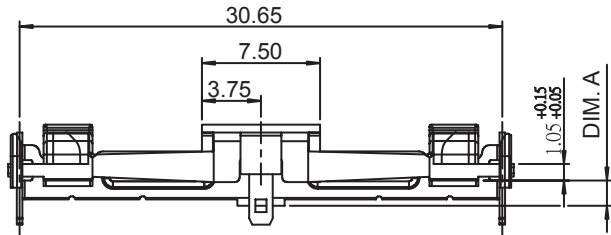
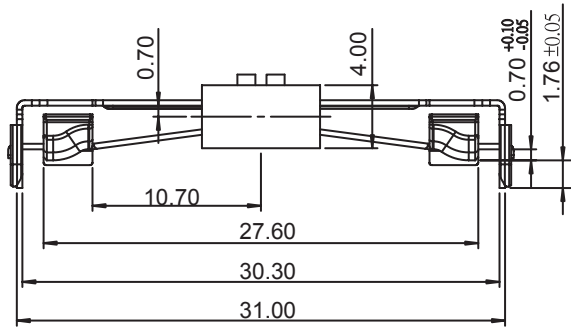
Rev	Drawn	Checked	Approved	Date
0	B.S.	S.M.	S.M.	3/28/07
A	B.S.	S.M.	S.M.	08/21/13

SMP TECHNOLOGY, INC.
PCI Express Mini Card Connector, 4.00mm Height

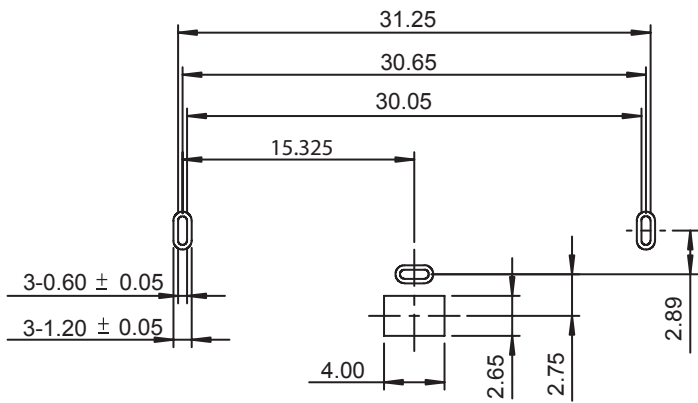
SCALE N/A

TOL. DEC. .X +/- 0.30 .XX +/- 0.20 .XXX +/- 0.15 ANGLE +/- UNIT: mm

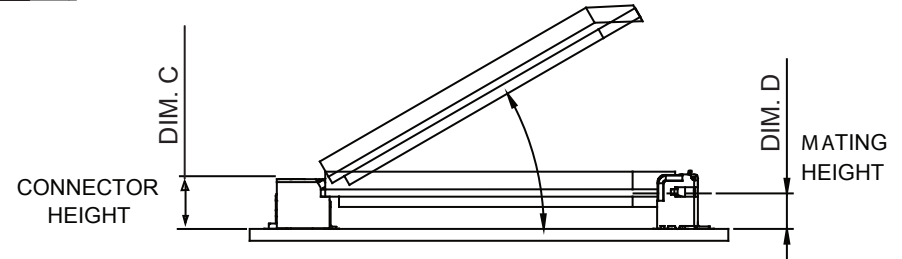
P/N: B032-5261-10X-Z



ISOMETRIC VIEW



RECOMMENDED PCB LAYOUT



PART NO.	DIM. A +0.05/-0.10	DIM. B +0.20/-0.05	DIM. C CONN HT.	DIM D MATING HT
LM1-B032-4.0	1.60	5.15	4.00	2.11
LM1-B032-5.2	2.80	6.35	5.20	3.31
LM1-B032-5.6	3.20	6.75	5.60	3.71
LM1-B032-6.0	3.60	7.15	6.00	4.11
LM1-B032-6.8	4.40	7.95	6.80	4.85
LM1-B032-8.0	5.60	9.15	8.00	6.11
LM1-B032-9.0	6.60	10.15	9.00	7.11
LM1-B032-9.2	6.80	10.35	9.20	7.31
LM1-B032-9.9	7.50	11.05	9.90	8.01

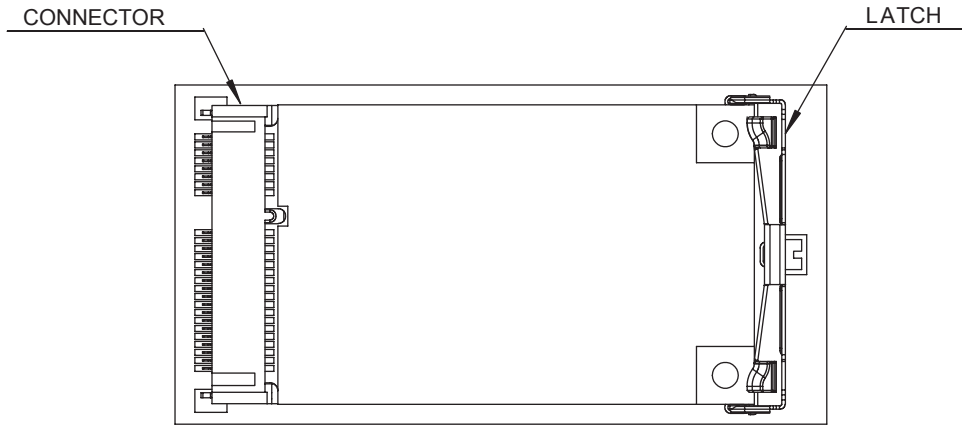
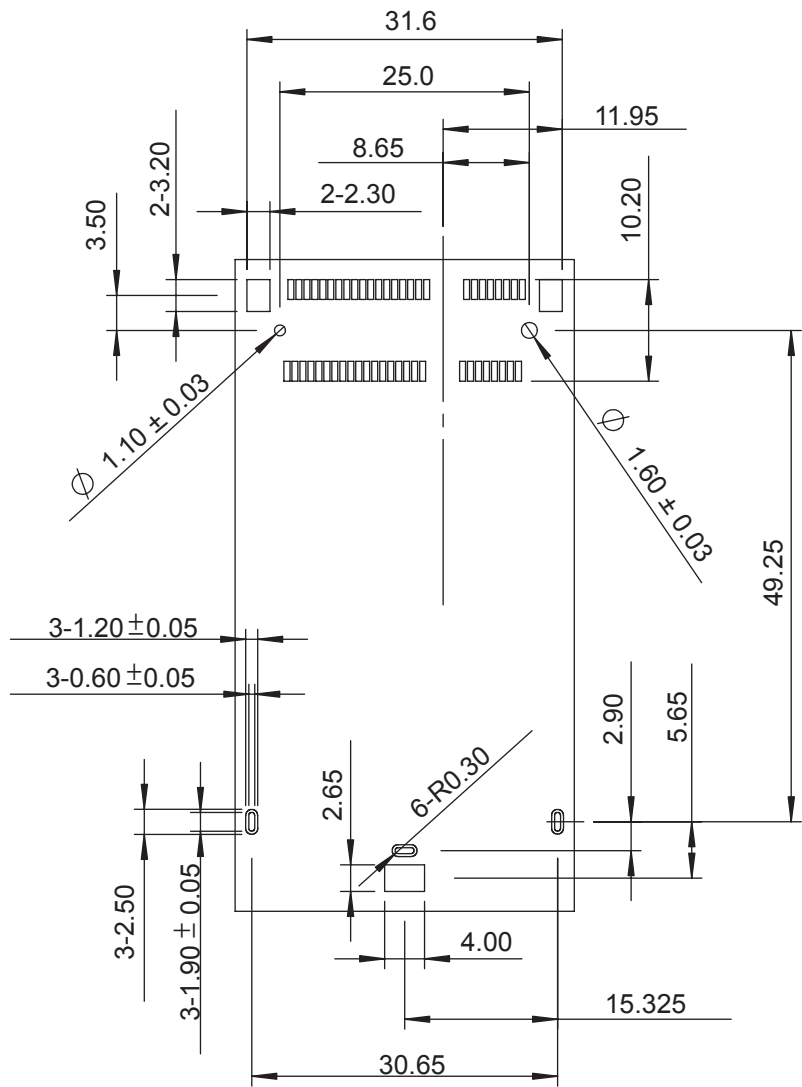
Rev	Drawn	Checked	Approved	Date
0	B.S.	S.M.	S.M.	07/28/12

SMP TECHNOLOGY, INC.

Latch Mechanism For PCI Express Card Connectors

Scale :N/A
 TOL. DEC. .X +/- 0.25 .XX +/- 0.15 .XXX +/- 0.10 ANGLE +/- UNIT: mm

P/N: B032-5261-10X-Z



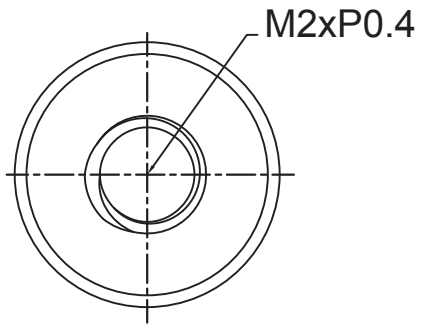
TOP VIEW OF CONNECTOR LATCH MOUNTED ON PCB

RECOMMENDED PCB LAYOUT FOR USE WITH LATCH MECHANISM

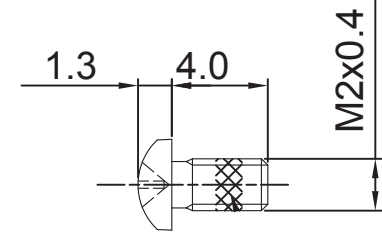
Rev	Drawn	Checked	Approved	Date
0	B.S.	S.M.	S.M.	07/28/12

SMP TECHNOLOGY, INC.

Latch Mechanism For PCI Express Card Connectors

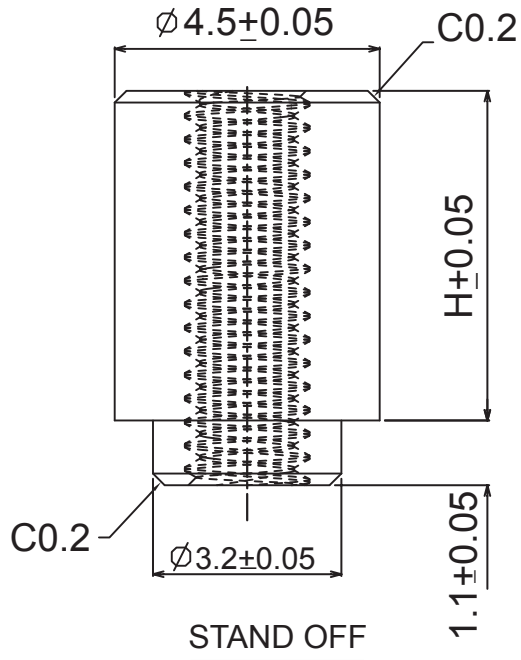


Part Number
HW - NYLOK



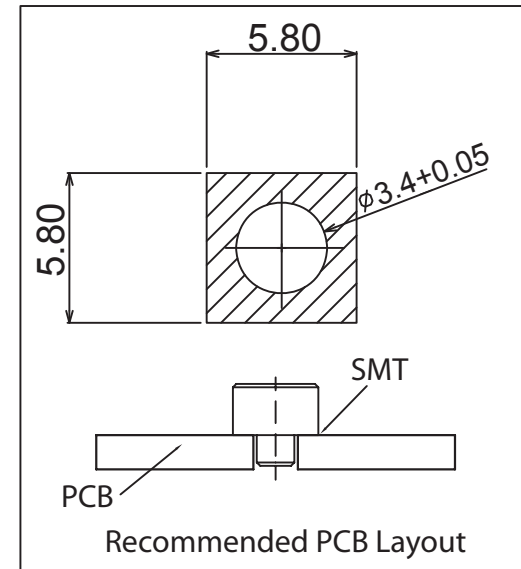
Ø 3.5

Material: Low Carbon Steel C1018
Plating: Nickel
General Tolerance ± 0.3



Plating: 100 u" Sn(Min.)

Part Number:	"H" ± 0.1
HW-B032-4.0N	1.6
HW-B032-5.2N	2.8
HW-B032-5.6N	3.2
HW-B032-6.8N	4.4
HW-B032-8.0N	5.6
HW-B032-9.2N	6.8
HW-B032-9.9N	7.5
HW-B032-10.6N	8.2



Rev	Drawn	Checked	Approved	Date
0 Issued	B.S.	S.M.	S.M.	5/05/10

SMP TECHNOLOGY, INC.
PCI Express Card Hardware / Standoffs